



Connectivity OS|soft PI

SKAN

Digital Projects

OSIsoft PI

The Data Management Platform for plant-wide monitoring, analysis and retrieval of process data

Process plants are providing an ever-increasing amount of data for process control starting from the field level. Collecting and processing this data manually is time-consuming and cost-intensive. To make optimum use of the available data a Data Management Platform like OSIsoft PI allows you to connect a wide variety of data sources via interfaces and connectors.

OSIsoft PI collects, analyses, visualises and archives the transferred data according to individual customer requirements. SKAN provides the analytical basis for a wide variety of application and business areas, whether corporate control, process management, maintenance management or quality management.

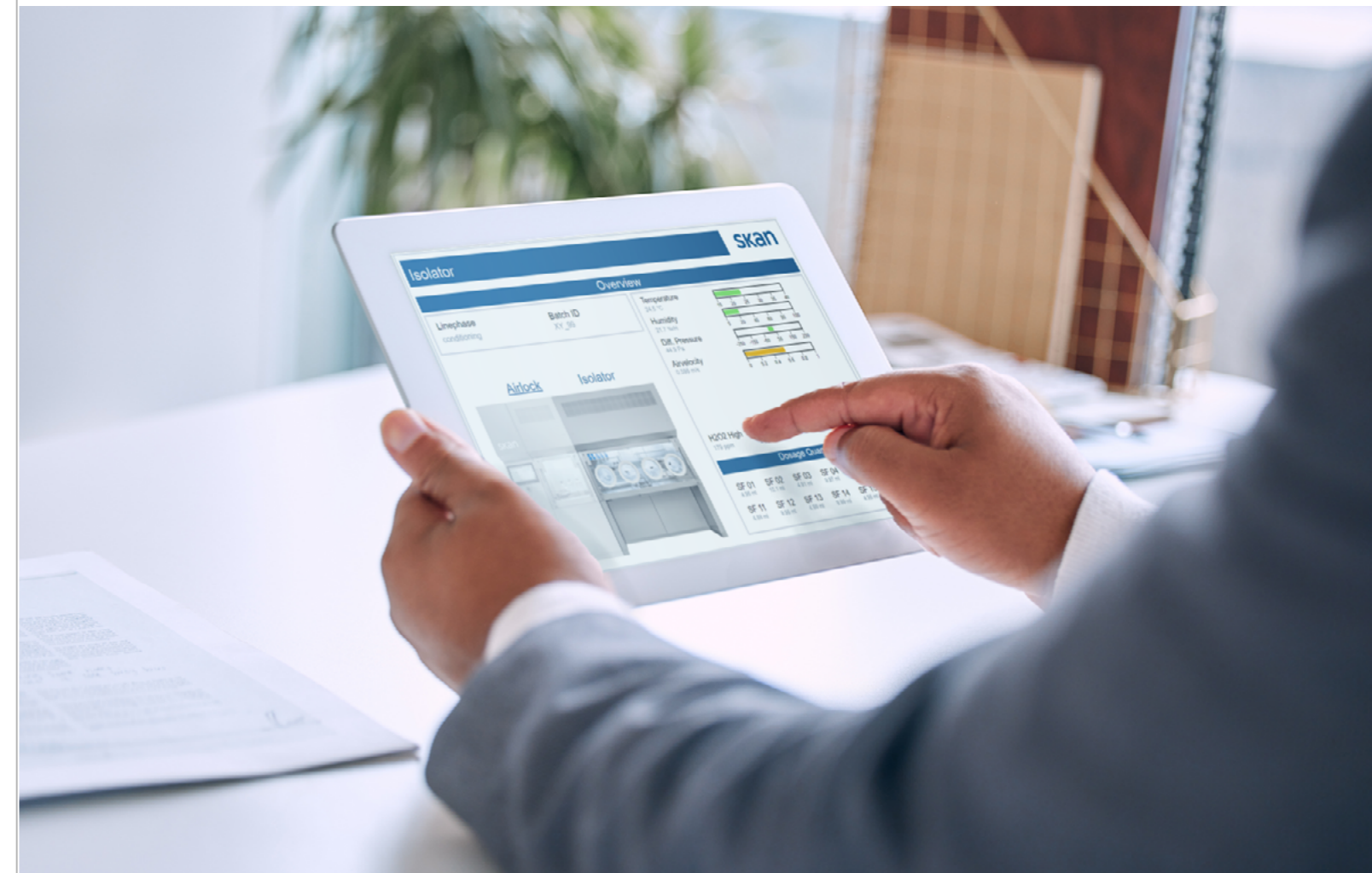
The SKAN Digital Solutions department is a Premier Partner of OSIsoft and is certified as a PI Systems Integrator. Through our extensive knowledge and expertise in isolators and OSIsoft PI, SKAN experts provide a complete connectivity package.



Basic Package

We offer a basic package and additional services to integrate the isolators into existing PI Systems. The basic package is designed to establish a connection between the PI System and the isolator. This package is also the main prerequisite for additional services to include the isolators.

Due to SKAN's expertise with the PI System, we are able to provide full integration of the system without the need for third-party involvement. Since the PI packages are preconfigured, you can save both time and money.



The benefits

- Your facilities all over the world are connected via one OSIsoft PI server
- Continuous sending of data during decontamination and production
- Real-time data allows immediate action when a trend is moving in the wrong direction
- Relevant stakeholders are kept continuously informed
- Long-term archiving of critical data (FDA-compliant)
- Data can be accessed and batches approved as soon as finished
- Other systems like MES, ERP or the HMI can also access the stored data

Integration requirements

- OPC UA Option for isolator SCADA needs to be selected (isolator data ready for PI System's use).
- A customer-installed, licensed PI System with PI Vision 2021 or higher



Watch how to integrate OSIsoft PI in isolators.



Basic package integration

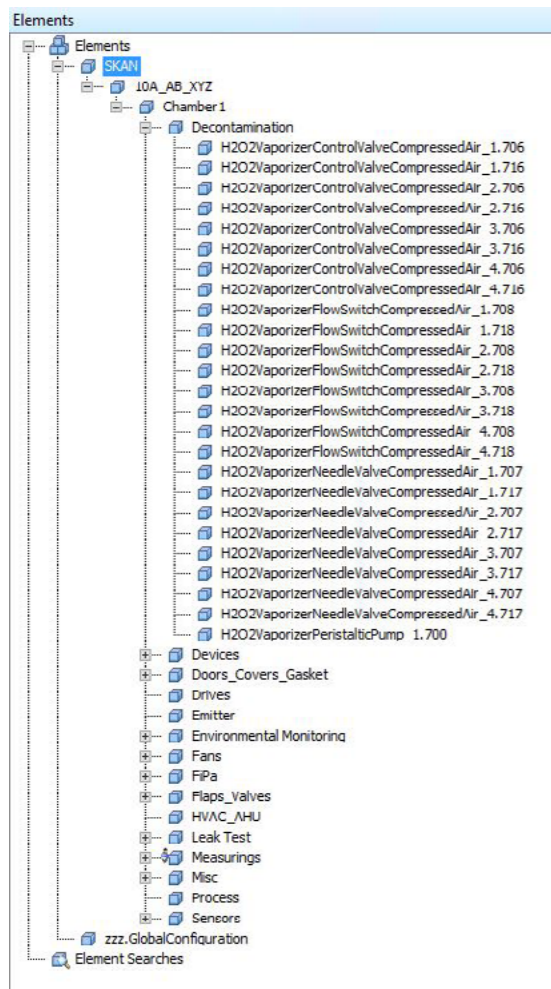
The basic package includes the connection between your isolator and your PI System, a preset asset framework and labelled PI tags as well as the visualisation on dashboards.

Connection

SKAN delivers a ready-configured PI Connector. This is also the basis for all additional services.



Where the connector is placed



Screenshot of a sample AF structure

Isolator Asset Framework (AF)

SKAN delivers a standardised prefabricated as-set framework structure (ready to use) for the ordered isolator.

Isolator tag implementation

SKAN delivers prepared, standardised, labelled and edited PI tags to include them in a PI System.

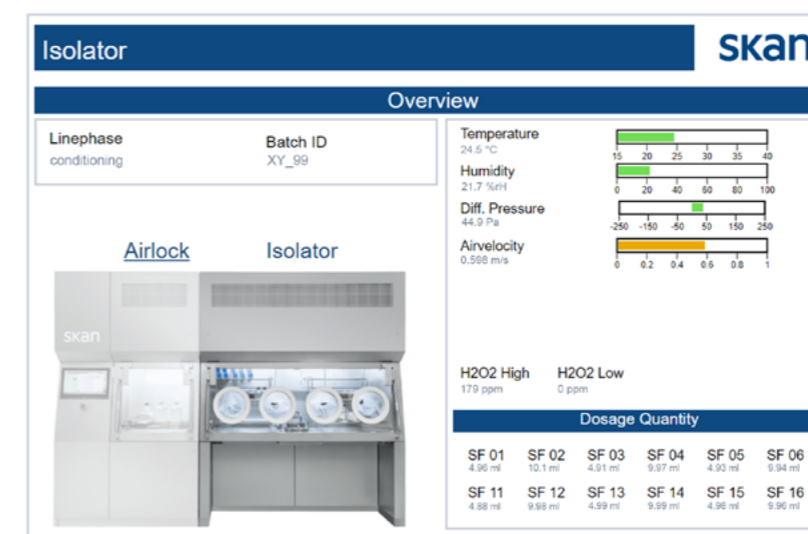
Name	Value
CirculationAirFan.AV	0 %
CirculationAirFan.SP	0 %
CirculationAirFan.Status	0
Group_name	CirculationAirF
PID_number_prefix	1
PID_number_suffix	200

Screenshot of a sample PI tag

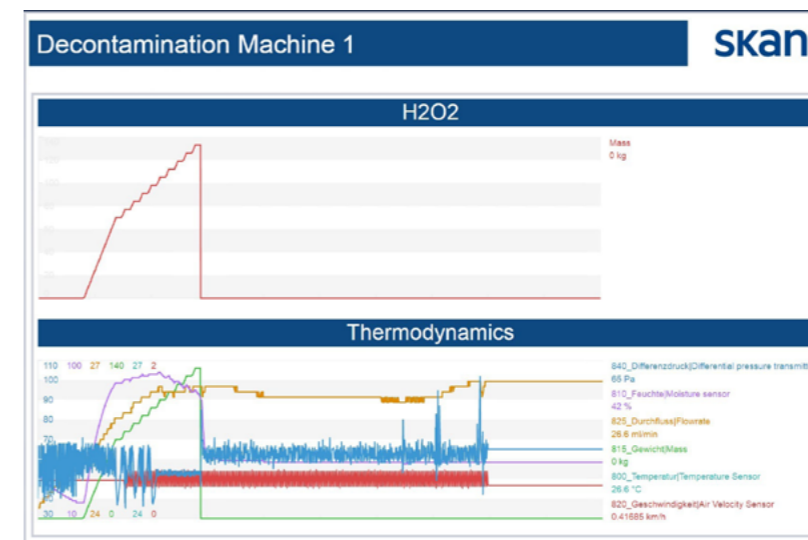
Visualisation

SKAN delivers standardised dashboards which provide the customer with a complete overview of the current status of the system and graphically visualises information such as:

- Measurement values
- Process data



Screenshot of a machine overview



Screenshot of a decontamination dashboard

Further OSIsoft PI Services

Not included in the package

- OSI-PI Systems licence costs must be covered by the customer
- No interface validation/qualification included on site. This is the responsibility of the customer if required.

Any problems with the package implementation?

SKAN also offers remote support for the implementation of the package.

Based on our extensive knowledge and experience with OSIsoft PI Systems, SKAN offers the following additional services within OSIsoft PI:

- Consulting
- First steps and introduction to PI OSIsoft for projects
- Installation, configuration and migration
- Technical documentation
- Verification/validation (IQ/OQ/PQ)
- Customised PI Vision dashboards
- Audit trail integration
- System surveillance tools (PI health status monitoring)
- KPI calculation
- Creation / setup of users and groups concept in PI
- Overall equipment effectiveness (OEE)
- Analysis of historical data
- Maintenance information
- Calibration data
- Reports (RtReports, Excel, PowerBI)



SKAN's PI project references beyond PI connectivity

In life sciences, production data is as important as the manufacturing of medical products themselves because product quality must be ensured at all times to guarantee patient safety.

Here are some examples:

Pharmaceutical company A

- Installation of more than 30 interfaces and configuration (OPC DA; RDBMS; UFL; OPC UA Connector)
- Creation of reports and the associated documentation
- Creation of displays for various packaging lines based on PI Vision

Pharmaceutical company B

- System architecture and installation/setup
- Rollout of three different PI server systems to a new standard platform
- A total of over 100 interfaces with more than 100 000 tags

Chemical-pharmaceutical company

- Assistance in the implementation of PI Systems and configuration of interfaces, AF structures and PI Vision in accordance with global standards
- Support for in the creation of validation documents

Chemical company

- PI system migration and interface renewal
- Implementation of the PI Batch extension so that data from batch processes can be recorded and evaluated

Flavour and fragrance company

- Rollout of the data acquisition solution based on PI OSIssoft for different chemical plants (4 production lines in Switzerland, 2 production lines in Brazil, 1 production line in Indonesia). Included definition, detail design, creation of templates for development and implementation

Energy company

- Event frame generation, reporting and PI AF SDK for the central collection and evaluation of 6 sets of wind power data in different countries



FAQ

1. How many dashboards are included in the Basic package?

We have collected the most important information relating to the isolator on two dashboards.

2. Are other dashboards available?

Yes! Modification and additional dashboards can be offered.

3. Are there any other services offered in the scope of OSIsoft PI?

Please ask your SKAN contact for more information.

4. What must be considered when connecting to an Allen Bradley PLC?

Since Allen Bradley does not support OPC UA, middleware is required. The packages are developed and tested for Kepware's OPC UA server.

5. How is the package delivered and who installs it?

The package is provided ready to use. The import is performed by the customer. An import guide is part of the delivery.

6. Who validates the connectivity of the packages if this is necessary?

The validation of the connection is the customer's responsibility.

7. Where does the data of the isolator come from?

The data for the basic package comes from the PLC. The data for the extension packages come from the PLC and the HMI.

8. Can the package be ordered at a later date?

Yes, we are happy to supply the package at a later date. Please note that they need to be created first.

9. Can older isolators be retrofitted with PI Basic package?

A technical clarification will be required in advance.

SKAN AG Kreuzstrasse 5
4123 Allschwil, Switzerland
+41 61 485 44 44, info@skan.ch

SKAN Stein AG Industriestrasse 3
4332 Stein, Switzerland
+41 62 885 03 00, info.stein@skan.ch

SKAN Deutschland GmbH Nickrischer Straße 2
02827 Görlitz/Hagenwerder, Germany
+49 358 223 789 0, de.info@de.skan.ch

SKAN US, Inc. 7409 ACC Blvd., Suite 200
Raleigh, NC 27617, USA
+1 919 354 6380, us.sales@us.skan.ch

SKAN Japan 5194-61 Katsuren-Haebaru Uruma-shi
Okinawa 沖縄県 904-2311, Japan 日本
+81 98 934 9922, jpskan@skan.ch

Aseptic Technologies Rue Camille Hubert 7-9
5032 Gembloux /Les Isnes, Belgium
+32 81 409 410, info@aseptictech.com

If you would like to find out more, please ask your SKAN contact for more information.

skan

V:1 / 2022

As our products are being continually improved, we reserve the right to make changes to product design, technology and features. No claims may therefore be derived from details or illustrations provided in this catalogue. We accept no liability for printing errors.